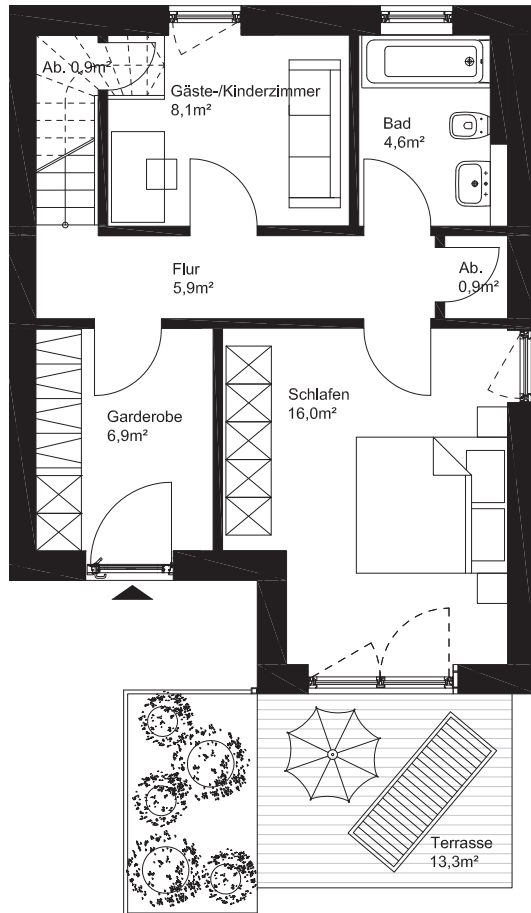


P#02

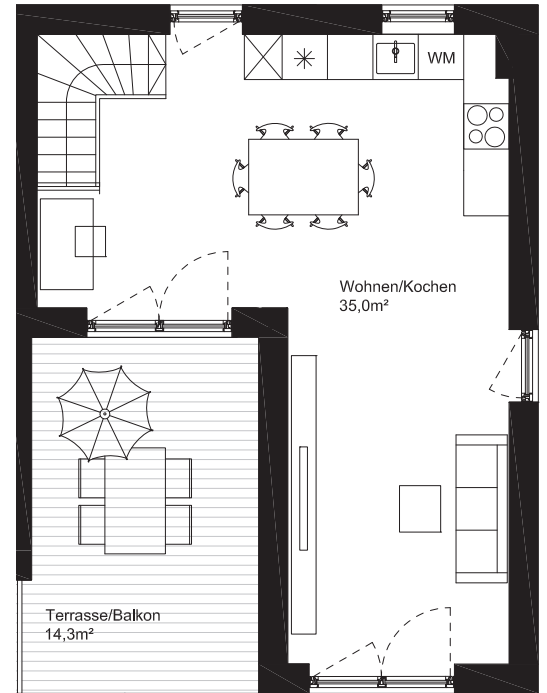
WOHNUNG Nr. 6, 26

3-Zimmer, 1.OG/2.OG, ca. 85 m²

1.OG



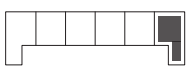
2.OG



1



2



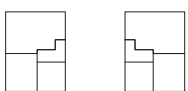
3



4



5



6

7

Energieeffizienzklasse A

Energiebedarfsausweis

Terrassen- / Balkonfläche zu 1/4 eingerechnet

Möbliering + Küche nicht im Kaufpreis enthalten

